

**EASTERN KERN
AIR POLLUTION CONTROL DISTRICT**



**2025
ANNUAL AB 2588 AIR TOXICS REPORT**

June, 2026

District Office
2700 "M" Street, Suite 302
Bakersfield, CA 93301
(661) 862-5250
ekapcd@kerncounty.com
www.kernair.org

Author: Miguel Sandoval
Senior Air Quality Engineer

Reviewed By: Gary Ray, Jr.
Air Pollution Control Officer

TABLE OF CONTENTS

| <u>Subject</u> | <u>Page</u> |
|---|--------------------|
| Overview of Air Toxics Information and Assessment Act | 1 |
| Assessment of Health Risks..... | 2 |
| Dissemination of Toxic Emissions and Risk Information | 4 |
| Evolution of Air Toxics Program | 5 |
| Current Status of Eastern Kern Toxic Emission Sources | 7 |
| Risk Reduction Requirements..... | 16 |
| Minimizing Air Toxic Emissions from New and Modified Facilities | 16 |
| Future of the Air Toxics Program | 16 |
| Summary..... | 17 |

OVERVIEW OF AIR TOXICS INFORMATION AND ASSESSMENT ACT

The Eastern Kern Air Pollution Control District (District) is a public health agency whose mission is to improve the health and quality of life for all residents in eastern Kern County through efficient and effective air pollution reducing strategies. Under Assembly Bill (AB) 2588 (Air Toxics Hot Spots Information and Assessment Act), the District works with facilities to quantify emissions of air toxics, determines the health risk caused by those emissions, reports emissions and notifies any significant risks through written public reports and neighborhood public meetings, and as required, takes steps to reduce such risks.

The Air Toxics Information and Assessment Act became law in 1987 when Governor Deukmajian signed Assembly Bill 2588 (AB2588). The purpose of the program is the following: 1) inventory air toxics emissions, 2) determine if these emissions are causing localized ambient concentrations of air toxics high enough to expose individuals or population groups to significant health risk, and 3) inform the public of significant health risk.

To accomplish this, an initial inventory of air toxic emissions and assessment of risk was required of all facilities 1) emitting greater than 10 tons/yr of “criteria” pollutants (oxides of nitrogen, volatile organic compounds, oxides of sulfur, and particulate matter) and/or 2) certain “named” categories of facilities emitting less than 10 tons/yr of criteria pollutants, but handling materials which could pose significant risk. (See Pages 4 and 5 for changes to these requirements.)

Over the life of the program, numerous types of facilities having potential to emit significant levels of air toxics have been identified and their impact on health risk has been quantified. Consequently, the most recent California Air Resources Board (CARB) air toxics guidelines list (August 27, 2007) specific facilities subject to air toxics emissions inventorying and reporting (see Emission Inventory Criteria and Guidelines for the Air Toxics "Hot Spots" Program Report, Appendix C – web site: <http://www.arb.ca.gov/ab2588/2588guid.htm>). These guidelines also place facilities into categories for purposes of update reporting based on calculated risk, and exempt “low priority” facilities from further update reporting. For facilities still subject to the program, these guidelines specify facility information to be reported, toxic substances to be addressed, and test methods to be used for quantifying emissions. The final version of the Air Toxics Hot Spots Program Guidance Manual for the Preparation of Risk Assessments developed by the Office of Environmental Health Hazard Assessment (OEHHA) and CARB was made available to the public in February of 2015. OEHHA had earlier developed three Technical Support Documents (TSDs) which provided the scientific basis for values used in assessing risk from exposure to facility emissions. The three TSDs describe non-cancer risk assessment (derivation of acute, 8-hour and chronic reference exposure levels), derivation of cancer potency factors, and exposure assessment methodology including stochastic risk assessment.

State Guidelines allow local air districts such as Eastern Kern Air Pollution Control District (District) to utilize air toxics analyses conducted as part of its Rule 210.1 New and Modified Source Review (NSR) process, in-lieu of requiring separate quantification of air toxics emissions to satisfy AB2588. Guidelines require the NSR permit contain conditions to ensure calculated toxic risk is not exceeded. Providing integration of the AB2588 with District's

permitting program is a time and cost savings both for the District and affected facilities, while neither public health nor the intent of either program is compromised.

Some of the District's smallest emitters are subject to the AB2588 program, including auto body shops, dry cleaners, and gasoline retailers. To provide some relief from the burden of reporting, these sources are identified in the Program as "industry-wide" sources. CARB, in cooperation with the California Air Pollution Control Officers Association (CAPCOA), has adopted and continues to develop health risk guidelines, risk reduction plans, and audit plans that Districts may utilize to assess, reduce, and verify toxics emissions from industry-wide sources. The "Auto Body Shop Industry-Wide Risk Assessment Guidelines" was approved by CAPCOA September 26, 1996, and the "Gasoline Service Station Industry-Wide Risk Assessment Guidelines" was approved in December, 1997 (Appendix E updated in November 2001). The California Air Resources Board (CARB) approved amendments to the Dry Cleaning Air Toxic Control Measure (ATCM) and adopted requirements for "Perchloroethylene (Perc) Dry Cleaners manufacturers and distributors on January 25, 2007. The amendments required phasing out the use of Perc dry cleaning machines and related equipment by January 1, 2023. Therefore, all District facilities have phased out Perc and transitions to hydrocarbon cleaning solvents.

ASSESSMENT OF HEALTH RISKS

Potential public health risk of each facility subject to the program is quantified by using dose-response data developed from animal and/or human studies. Dose is calculated using mathematical modeling techniques, and is dependent upon the following data: emission rate of each toxic substance; the toxicity (reference exposure level) of the substance; release point characteristics, including stack height, diameter, gas temperature, and gas velocity; meteorological conditions, including ambient temperature, wind speed, and mixing height; and characteristics of the surrounding terrain. Response is based upon "potency slope factors", approved by the U.S. Environmental Protection Agency (U.S. EPA) or OEHHA, derived from health impact studies that have undergone public and peer review. Currently, the "Air Toxics Hot Spots Program Guidance Manual for Preparation of Health Risk Assessments" (Guidance Manual), published by OEHHA in 2015, is utilized for preparing health risk assessments. The Guidance Manual is a concise description of algorithms, recommended exposure variables, cancer, and non-cancer health values, and the air modeling protocols needed to perform a health risk assessment. The Guidance Manual updates the previous version (2003) and reflects advances in the field of risk assessment along with explicit consideration of infants and children.

Health risk can be quantified using three different methods: 1) a "prioritization score", 2) a screening level risk assessment, or 3) refined risk assessment modeling. All three methods make use of mathematical dispersion models approved by CARB as well as U.S. EPA and/or OEHHA approved potency values. Dispersion models are computerized, as several thousand calculations are often necessary to yield significant results. In order to assist the districts in prioritizing facilities, CAPCOA, in cooperation with OEHHA and CARB, developed the Air Toxics "Hot Spots" Program Facility Prioritization Guidelines in July 1990. The guidelines provide suggested procedures in performing risk assessment. In 2015, CAPCOA updated these guidelines to incorporate OEHHA revisions to risk assessment methodology.

The final version of CAPCOA Air Toxics “Hot Spots” Facility Prioritization Guidelines was made available to the public in August 2016 (website: <http://www.capcoa.org>).

Determining a facility’s “prioritization score” (PS) is the least complex and most health conservative way of characterizing risk. The procedure incorporates many health conservative assumptions to insure potential risk is not underestimated. The score is calculated using either the Emissions and Potency Procedure (EPP) or the Dispersion Adjustment Procedure (DAP), which are described in the previously mentioned CAPCOA guidelines. The EPP considers only emission rate, pollutant potency, and proximity of receptors, while the DAP also considers dispersion due to release height. The prioritization process is summarized below:

Table1: Prioritization Thresholds

| Prioritization Thresholds | Priority Category | Category Requirements |
|---------------------------|-----------------------|--|
| ≤ 1 | Low Priority | Facility is conditionally exempt from further AB2588 requirements |
| >1 and ≤ 10 | Intermediate Priority | Facility is required to provide an update summary on a quadrennial basis |
| > 10 | High Priority | Facility is required to perform a Health Risk Assessment |

Due to its inherent conservatism, if the prioritization score indicates significant risk, a more detailed risk assessment model is calculated. The next level of assessment is the “screening model”, and includes assumptions to ensure that, regardless of source location or meteorological conditions, assessed risk will not be underestimated. Like the prioritization score model, the “screen model” does not account for multiple release points; however, it does account for dispersion of pollutants using meteorological data and provides for additional detail regarding emission release characteristics. Results of a screening dispersion analysis are used as input for an exposure assessment model to yield carcinogenic (cancerous) and non-carcinogenic health effects.

To best assess air quality impact of a facility on its nearby receptors, a “refined risk assessment model” is used. This model is capable of representing the combined effect of multiple emission points, varying terrain, and multiple receptors at discrete locations. The dispersion model used in refined modeling also utilizes local meteorological data. Refined risk analyses are complex and costly, but produce the most true-to-life assessment of risk. The refined risk assessment also utilizes conservative assumptions; therefore, calculated risk is not underestimated. The HRA thresholds are summarized in the next page:

Table 2: HRA Thresholds

| Health Risk Thresholds | Risk Category | Category Requirements |
|--|------------------------------|--|
| Cancer risk < 1 in a million, and Total hazard index of < 0.1 | Low Risk | Facility is conditionally exempt from further AB 2588 requirements |
| $1 \leq$ Cancer risk <10 in a million, or $0.1 \leq$ Total hazard index \leq 1.0 | Intermediate Risk | Facility is required to provide an update summary on a quadrennial basis |
| Cancer risk \geq 10 in a million, or Total hazard index of > 1.0 | Public Notification Required | Facility is required to go through the public notification process |
| Cancer risk > 100 in a million, or Total hazard index of > 5.0 | Risk Reduction | Facility is required to go through the public notification process and prepare a Risk Reduction Plan |

DISSEMINATION OF TOXIC EMISSIONS AND RISK INFORMATION

All information collected during this process is disseminated to the public through public meetings where results are presented and discussed. Additionally, the Act specifies all persons located in areas where significant adverse health effects may occur, be individually notified of this risk and permitted an opportunity to discuss estimated risk with the District and the emitting facility. Levels of risk determined by District’s Board of Directors to be significant for purposes of AB2588 public notification are: 1) a cancer risk exceeding 10 in 1 million, or 2) a ratio of the chronic or acute exposure to the recommended exposure level (referred to as a “hazard index”) exceeding 1.0.

These levels of significance have also been chosen by most other California air districts, and are values recommended by CAPCOA. Currently no District facilities exceed cancer risk of greater than 10 in 1 million or hazard index greater than 1.0.

The air toxic emission inventory is public information and available for public review. The procedure of adoption and modification of the guidelines and fees imposed is a public process and includes noticing, workshops, periods for public comment, and eventual adoption at a public District board meeting. Before District procedures were adopted by the Board in January 1994, the draft was subject to a public process. In 1994, all affected facilities were notified in writing, and the public was notified (an announcement was published in the District newsletter and “The Bakersfield Californian”) of a workshop in Mojave. Public comments were received for 30 days following the workshop, and the revised document was mailed to all parties attending the workshop. The District adoption hearing was “noticed” in the District newsletter and “The Bakersfield Californian” and public comments were received at the District Board adoption hearing. These Public Notification Procedures provide a mechanism to establish a level of significance for cancerous and non-cancerous health risk and identify the procedure by which individuals exposed to significant risk will be notified of

this risk by both the District and the facility. Notified individuals are offered the opportunity to attend a public meeting at which results are further discussed.

This annual report ranks and identifies facilities according to cancer and non-cancer risk posed, and describes toxic control measures. After presentation at a public hearing, it is distributed to CARB and upon request to any interested parties included the Kern County Board of Supervisors, city councils in the District, and the County Public Health Officer.

In the fall of 1998, CARB increased availability of toxics inventory data to the public by posting this data on its web site (www.arb.ca.gov/ab2588/ab2588.htm), CARB regularly updates this information. The District regularly reviews facility data and revises the inventory to reflect changes made at facilities within the District. This Annual Report includes updates to toxic information for core facilities and new/modified permitted sources.

EVOLUTION OF AIR TOXICS PROGRAM

The Air Toxics Program has been implemented for over three decades (first reports were submitted in 1990), and much information has been gathered about toxic emission sources and health impacts of air pollutants. The program has been modified over time as better information has become available.

1996 Guidelines Amendment: In May 1996, the “CARB Emission Inventory Criteria and Guidelines” were modified; in September 1996, Assembly Bill 564 became law exempting additional low risk facilities from the program. Revised guidelines and mandates of AB564 now base air toxic reporting requirements on the calculated health risk associated with a facility’s toxic emissions rather than total annual emissions of “criteria” pollutants (oxides of nitrogen, oxides of sulfur, particulate matter, carbon monoxide, and volatile organic compounds). Therefore, after initial submittal of a toxic emission inventory plan and report, only those facilities determined to pose intermediate or high-level health risk are required to submit a quadrennial update report. This update report, if required, must quantify the following: 1) emissions from units which have an emission increase of greater than 10%; 2) emissions from units emitting a newly listed air toxic air contaminant; 3) emissions of a pollutant for which the unit risk value has been revised; or 4) emissions from new and modified emission units which may result in the facility changing reporting categories due to increased health risk.

Per the revised guidelines, facilities determined to be low level risk are exempt from future reporting requirements and fees, provided: 1) the nearest receptor is no closer, 2) there are no changes to risk calculation procedures, and 3) there are no changes to health effect values which would result in the facility being reclassified as intermediate or high level risk.

2015 OEHHA HRA Guidelines – In 2015, the Office of Environmental Health Hazard Assessment (OEHHA) adopted updated Health Risk Assessment (HRA) guidelines. The District adopted revised prioritization and HRA guidelines during reassessment of health risks for certain large facilities using the updated OEHHA guidelines.

2024 AB 2588 EICG and CTR Amendments – On November 19, 2020, CARB adopted amendments to the Emission Inventory Criteria and Guidelines (EICG) to harmonize with the

Criteria Pollutant and Toxics Emissions Reporting (CTR) regulation. The CTR and EICG regulations were approved with changes by the Office of Administrative Law and filed with the Secretary of State on March 21, 2024. The amendments to CTR were retroactively effective January 1st, 2024. The purpose of the CTR regulation is to establish a uniform statewide system for the annual reporting of criteria and toxic air contaminants emitted by District permitted facilities.

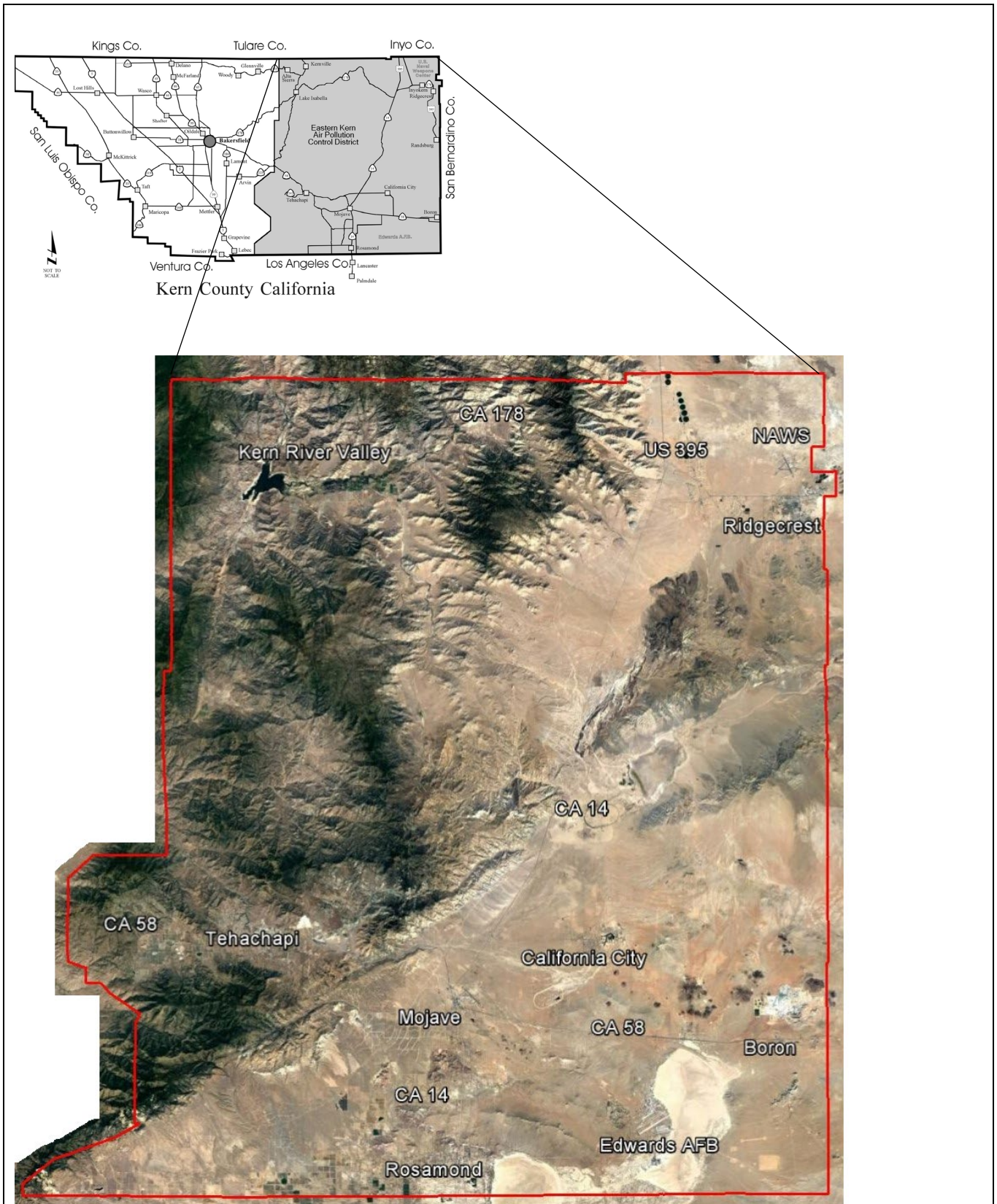
Amendments to the EICG will supplement the AB2588 program in various ways including but not limited to the following: (1) provide additional consideration factors for exempting facilities and reinstating previously-exempt facilities; (2) require reporting of 900+ new substances and three broad functional groups of chemicals found in the emissions from facilities; update risk screening modeling approaches; (3) align with the reporting requirements in the CTR. 4) specify information a facility operator must include in a facility's air toxics emission inventory plan and inventory report; 5) identify specific classes of facilities that emit less than ten tons per year of criteria pollutants that are subject to the "Hot Spots" program and specifies their emission inventory reporting requirements; 6) specify source testing requirements, acceptable emission estimation methods, and the reporting formats to be used; 7) establish groups of the substances to be inventoried; 8) designate facilities into levels for purposes of update reporting, based on prioritization scores, risk assessment results, or *de minimis* thresholds; 9) exempt "low level" facilities from further update reporting unless specified reinstatement criteria are met, and specifies the update reporting requirements for other facilities; 10) specify information a facility operator must include in a facility's update to their emission inventory; and 11) include provisions for integrating "Hot Spots" reporting with other district programs if specified criteria are met.

Lastly, for a new or modified facility has been subject to New and Modified Source Review (District Rule 210.1), health risk presented by all potential TAC emissions will be evaluated as part of the permitting process.

This page was intentionally left blank.

CURRENT STATUS OF EASTERN KERN TOXIC EMISSION SOURCES

Eastern Kern Air Pollution Control District has jurisdiction of the geographic area shown below.



The District’s jurisdiction encompasses 3,704 square miles and has a population of approximately 174,000. The area includes two military bases (Edwards Air Force Base and Naval Air Weapons Station at China Lake), and the cities and communities of Lake Isabella, Tehachapi, Mojave, Rosamond, California City, Ridgecrest, and Boron in the high desert region of Kern County. Overall, the District’s sparsely populated area provides significant dispersion potential for most sources within the District’s jurisdiction.

The District has assessed potential health risk from facilities through implementation of CARB’s “Emission Inventory Criteria and Guidelines (EICG)” Each air toxics emission source within the District was placed into one of four categories, based upon potential health risk created by the facility.

Category No. 1 (High Level Risk)

No facilities have an approved health risk assessment exceeding 10 in one million or non-cancer (acute and chronic risk) hazard index exceeding 1.0.

Category No. 2 (Intermediate Level Risk)

The following facilities have either: 1) an approved health risk assessment showing increased cancer risk is less than 10 in 1 million and a total hazard index (THI) less than 1.0, or 2) a prioritization score less than 10.0, but more than 1.0 for both cancer and non-cancer effects (health risk assessment not required).

Table 1

| Facility Name | Health Risk Assessment | | | Prioritization Score | |
|--|------------------------|--------------|-------|----------------------|------------|
| | Cancer | Non-Cancer | | Cancer | Non-Cancer |
| | | Chronic | Acute | | |
| California Portland Cement Co. | Not Required | Not Required | | 3.77 | 0.98 |
| Edwards Air Force Base | Not Required | Not Required | | 9.87 | 0.04 |
| Golden Queen Mining Co. | Not Required | Not Required | | 6.20 | 2.00 |
| Innovative Coatings Technology (INCOTEC) | Not Required | Not Required | | 3.14 | 0.09 |
| <i>NASA Armstrong Flight Research Center</i> | Not Required | Not Required | | 4.78 | 0.01 |
| Naval Air Weapons Station | Not Required | Not Required | | 2.21 | 1.26 |
| National Cement Company | Not Required | Not Required | | 4.29 | 0.31 |
| PRC-DeSoto International | Not Required | Not Required | | 7.02 | 0.70 |
| <i>Scaled Composites</i> | Not Required | Not Required | | 2.84 | 9.28 |
| <i>Stratolaunch Mojave</i> | Not Required | Not Required | | 8.81 | 0.05 |
| Tehachapi Cement Plant | 5.25 in 1 million | 0.14 | 0.33 | 12.21 | 0.84 |
| Tehachapi Cummings County Water District (TCCWD) - Pump Plant #4 | Not Required | Not Required | | 1.04 | 0.91 |

Facilities in *italic* font were re-evaluated based on 2025 emission data.

Table 2 -Single Engine Facilities (Intermediate Level Risk)

| Facility Name | Health Risk Assessment | Prioritization Score |
|--|------------------------|----------------------|
| | Cancer | Cancer |
| Alta One Federal Credit Union (Ridgecrest) | 8.1 | 11.55 |
| Tehachapi Police Department | 3.29 | 40.54 |
| Pacific Bell (Bear Valley Springs) | 7.1 | 17.5 |
| AT&T Services (Rosamond) | 5 | 10.56 |
| Frontier California (Inyokern) | 5.7 | 10.61 |

Diesel Engine Facilities Only

Table 3- Industry-Wide Facilities (Intermediate Level Risk)

| Facility Name | Cancer Health Risk (Chances/Million) |
|---|--------------------------------------|
| Barn Ridgecrest | 4.44 |
| Boron Shell | 1.40 |
| Car Care Center / Shoppette | 1.24 |
| Circle K Store, Inc. | 3.82 |
| Eastridge Market | 2.29 |
| Inyo Crude Inc. | 2.6 |
| Jaco Hill #3349 Minit Stop | 6.86 |
| Jaco Oil #7798 / Howards, Rc | 2.77 |
| Jaco Oil #9901 Fastrip Rosamond | 1.3 |
| Jaco Oil) #8894 (Fastrip) Ridgecrest | 5.45 |
| Jaco Oil) Jamieson Hill # 7701 / Fastrip # 45 California City | 2.4 |
| Jaco Oil) Jamieson Hill #7794 Fastrip Tehachapi | 3.93 |
| Miramar Enterprises | 1.52 |
| Ramos Strong | 3.17 |
| Rosamond Chevron | 8.32 |
| Sagewood Plaza | 1.42 |
| Speedway (Arco) | 1.38 |
| Steve Spradlin | 1.49 |
| V&K Oil Company | 3.81 |

Category No. 3 (Low Level Risk)

The following facilities have either: 1) a prioritization score equal to or less than 1.0 for both carcinogenic and non-carcinogenic pollutants, 2) an approved health risk assessment showing less than 1 in 1 million increased cancer risk and total hazard index less than 0.1 for each toxicological endpoint, 3) a Rule 210.1 health risk analysis showing cancer risk less than 1 in 1 million and total hazard index less than 0.1, or 4) a “de minimis” classification as defined in CARB’s Guidelines.

Table 3

| Facility Name | Health Risk Assessment | | Prioritization Score | |
|--|------------------------|------------|------------------------|------------|
| | Cancer | Non-Cancer | Cancer | Non-Cancer |
| California Correctional Institution (Tehachapi) | Not Required | | 0.002 | 0.001 |
| <i>Commodity Resource & Environmental</i> | HRA Not Required | | 0.02 | 0.0002 |
| Indian Wells Valley Cremation | HRA Not Required | | Exempt as “de minimis” | |
| Kemira Water Solutions | 0.11 in 1 million | 0.07 | 23.02 | 1.22 |
| Kern County Waste Management (Lake Isabella Landfill) | HRA Not Required | | 0.47 | 0.02 |
| Kern County Waste Management (Ridgecrest Landfill) | HRA Not Required | | 0.38 | 0.02 |
| Kern County Waste Management (Tehachapi Landfill) | HRA Not Required | | 0.00 | 0.20 |
| Ridgecrest Regional Hospital | HRA Not Required | | Exempt as “de minimis” | |
| Tehachapi Cummings County Water District (TCCWD) - Pump Plant #2 | HRA Not Required | | 0.08 | 0.17 |
| TCCWD- Pump Plant #3 | HRA Not Required | | 0.57 | 0.91 |
| Trical, Inc. | HRA Not Required | | 0.09 | 0.89 |
| U.S. Borax, Incorporated | 0.05 in 1 million | | 0.08 | 0.01 |
| Wastewater Treatment Plants (All) | HRA Not Required | | Exempt as “de minimis” | |

De minimis: The probability of the facility to present a health risk the public is very small; therefore, calculating a prioritization score for the facility is not effective use of District resources.
 Facilities in *italic* font were re-evaluated based on 2025 emission data.

Category No. 4 (New Facilities and Facilities with Increased Emissions)

During 2025 calendar year, District staff issued 176 Authority to Construct permits for projects subject to Rule 210.1 (NSR); the majority of these projects had no significant impact on facility toxic air contaminant (TAC) emissions. Some of the most frequent projects with potentially significant toxic emissions are facilities proposing to install diesel piston engines. CARB and OEHHA have determined that diesel exhaust presents a significant carcinogenic and non-carcinogenic health risk due to diesel particulate matter (DPM) emissions. DPM consists of small particles less than 2.5 microns in diameter which are made up of hundreds of different toxic compounds including but not limited to carbon, ash, metallic particles, sulfates, and silicates. Currently, all permitted diesel engines have a carcinogenic risk less than 10 in 1 million and a non-carcinogenic hazard index of less than 1.0. The Natural gas and liquefied petroleum gas (LPG) fired engines emit significantly less TAC and also yielded carcinogenic risk of less than 10 in 1 million and a non-carcinogenic hazard index of less than

1.0. A summary of the number of internal combustion engines permitted during calendar year 2025 is listed in Table 3; these do not include agricultural engine registrations.

Table 4

| Rating Range (Brake horsepower) | Number of units |
|--|------------------------|
| 50 – 99 | 9 |
| 100 - 299 | 56 |
| 300 - 599 | 23 |
| 600 - 699 | 4 |
| 700 - 799 | 4 |
| 800 - 899 | 4 |
| 900 - 999 | 2 |
| 1000 - 4999 | 3 |
| 5000 - 9999 | 0 |
| 10000 or greater | 0 |
| Total | 105 |

The health risk evaluations for these engines revealed that 2 out of the 105 diesel engines evaluated, resulted in a cancer risk greater than 1 in a million but less than 10 in a million. These two engines (based on worst case/potential emissions) can become intermediate risk facilities. In the future, these two engines will be re-evaluated based on actual emissions to verify if they pose a significant health risk to the community at large. However, with regards to the remaining 103 new engines permitted in 2025, it can be seen with certainty that a significant health risk to the community is not expected based on permitted emission limits.

In addition to piston engines, the following new and modified facilities that emit toxic air contaminants were also permitted during 2025:

Aggregate, Minerals, or Asphalt Handling Facilities:

Baldi Bros applied for a new asphalt concrete batching operation. The asphalt batching operation is expected to release toxic air contaminants. The project was evaluated for compliance with AB2588 as part of the permitting process. A prioritization risk screening showed low priority to nearest offsite receptors. Therefore, a significant health risk to the community at large is not expected.

A portable crushing/concrete recycling operation for North American Recycling and Crushing was also permitted in 2025. The equipment was permitted as portable and is not expected to operate at a single location for more than a few months depending on contract duration. Therefore, carcinogenic risk which is based on 25-30 year exposure is not expected. Additionally, non-carcinogenic acute risk prioritization showed low priority. Therefore, a significant health risk to the community at large is not expected.

A mineral processing plant (CR minerals) was also permitted in 2025. A health risk assessment (HRA) provided by applicant showed low carcinogenic risk (less than 1 in a million). The HRA also showed a low risk for acute and chronic non-carcinogenic risk with a hazard index less than 0.01. Therefore, a significant health risk to the community at large is not expected.

Surface Coating Operations/Curing Operations:

Two surface coating operations for Naval Air Weapons Stations were modified during 2025. An increase in toxic emissions was not proposed for these modifications. Additionally, previous health risk analysis conducted in 2023 showed low priority. Stratolauch, LLC also applied for a new surface coating operation permit in 2025. A health risk prioritization showed low priority for health risk to offsite receptors. Sierra Technical Services also applied to for a new composite curing operation in 2025. The prioritization scores for new curing operation showed low priority. Therefore, a significant health risk to the community was not expected from any of the new or modified surface coating/curing operations.

Other Miscellaneous Operations:

Other projects with an increase in TAC emissions include, concrete batching operations, woodworking operations, and turbine engines. These projects were deemed low priority, and therefore do not pose significant health risks to the surrounding communities at large.

Core Facility Updates

Core facilities subject to quadrennial updates and updated this year include the following:

NASA Armstrong Flight Research Center

The NASA Armstrong Flight Research Center (AFRC) operates a space, research, and technology facility, located in Edwards, CA. This facility generates emissions from multiple sources through various processes. These processes include but are not limited to: Aircraft Ground Support Equipment, Emergency and Supplementary Power Equipment, Aircraft Part Fabrication, Fuel Storage and Dispensing Operations, and Permit Exempt Boilers.

The nearest offsite receptor (EAFB worker) is located more than 500-m from the facility and the nearest residential receptor is located more than 3,300-m from the facility. TAC emissions from the facility were determined based on calendar year 2025 activities.

Prioritization score was based on emissions from the following sources at the facility:

- Aircraft Ground Support Equipment
- Emergency and Supplementary Power Equipment
- Aircraft Parts Fabrication
- Fuel storage and Dispensing
- Natural Gas Fueled Boilers

Based on toxic emissions submitted, prioritization results were generated using the Hotspots Analysis and Reporting tool (HARP2) Emissions Inventory Module. The primary drivers of carcinogenic risk (>92% of prioritization score) are diesel particulate matter from diesel engines and sodium dichromate from sealants application. Similarly, noncancer chronic risk is driven (>90% of prioritization score) by diesel particulate matter from diesel engines. Overall, both carcinogenic and non-carcinogenic risk were deemed to be intermediate priority (prioritization score less than 10) based on prioritization score of 4.78 for carcinogenic risk. Therefore, NASA Armstrong Flight Research Center was classified as an “intermediate facility” and subject to quadrennial updates to health risk prioritization.

Stratolaunch, LLC

Stratolaunch operates an aerospace company involved the design, manufacturing, and flight test of aircraft at the Mojave Air and Space Port. Prioritization score was based on emissions from the following sources at the facility:

- Composite part manufacturing
- Thermal protection material manufacturing
- Insulation material processing
- Vehicle assembly
- Surface Coating
- Aircraft Ground Support Equipment and Backup Piston Engines
- Rocket Engine Testing

The nearest worker receptor is located 450-m from the manufacturing facility and the nearest residential receptor is located at least 1,500-m from the facility. TAC emissions from the facility were determined based on calendar year 2025 activities.

Stratolaunch submitted prioritization results using the Hotspots Analysis and Reporting tool (HARP2) Emissions Inventory Module. The primary driver of carcinogenic risk (>92% of prioritization score) is diesel particulate matter from diesel engines. The noncancer chronic risk is driven (>62% of prioritization score) by acrolein and benzene emissions resulting from the curing of composite parts in natural gas fueled ovens. Noncancer (acute) risk is expected to be negligible due to toxic emissions and receptor proximity. Overall, the carcinogenic was deemed to be intermediate priority (prioritization score less than 10) based on prioritization score of 8.80. The overall facility non-carcinogenic chronic and acute risk to offsite receptors was deemed to be low priority (prioritization score less than 1). Due to the intermediate carcinogenic risk, Stratolaunch was classified as a “intermediate risk facility” and subject to quadrennial updates to health risk prioritization.

Scaled Composites

Scaled Composites operates an aerospace company involved the design, manufacturing, and flight test of aircraft at the Mojave Air and Space Port. Prioritization score was based on emissions from the following sources at the facility:

- Carbon and Fiberglass Shaping
- Curing Ovens
- Foam Shaping
- Surface Coating
- Portable and Emergency Piston Engines

The nearest offsite worker receptor to any of the manufacturing facilities is located approximately 60-m away and the nearest residential receptor is located at least 275-m from the facility. TAC emissions from the facility were determined based on calendar year 2025 activities.

Scaled Composites submitted prioritization results using the Hotspots Analysis and Reporting tool (HARP2) Emissions Inventory Module. The primary drivers of carcinogenic risk (>83% of

prioritization score) are benzene and formaldehyde emissions resulting from curing oven operation. Similarly, noncancer chronic risk (>83% of prioritization score) is driven by acrolein and benzene emissions resulting from curing oven operation. The noncancer (acute) risk is driven primarily by nickel emissions (>60% of prioritization score) found in coating formulations in their surface coating operation and acrolein emissions from their curing oven operation. Overall, both carcinogenic and non-carcinogenic risk were deemed to be intermediate priority (prioritization score less than 10) based on prioritization score. Therefore, Scaled Composites was classified as an “intermediate facility” and subject to quadrennial updates to health risk prioritization.

Commodity Resource and Environmental

Commodity Resource and Environmental recycles gold and silver from the electronics and photographic industries and the jewelry business. There are two distinct process lines on the site, the thermal reduction system and the chemical process system. The thermal reduction system consist of rotary dryers, kilns and roasting ovens. The ovens are used to reduce organic and extraneous materials to a form which the precious metals can readily be separated. The rotary drying tubes generate a powder which can then be melted and formed into bars or cones. The molten material when placed in the mold, separates with the heavier precious metals falling to the bottom and the other materials (Slag) rising to the top. On the other hand, the chemical process system involves the recovery of silver from photographic film (mostly x-ray film). This process is performed in a heated solution of about one percent sodium hydroxide. Prioritization score was based on emissions from the following sources at the facility:

- Rotary Pyrolyzer
- Metal Recovery Furnaces
- Crucible Furnaces
- Ball Mills/Film Granulators

The nearest worker receptor is located 100-m from the manufacturing facility and the nearest residential receptor is located at least 800-m from the facility. TAC emissions from the facility were determined based on calendar year 2024 activities. Their toxic inventory was not received before the deadline to be included in 2024 report. Therefore, health risk analysis will be included in this year’s report.

Commodity Resource and Environmental submitted prioritization results using the Hotspots Analysis and Reporting tool (HARP2) Emissions Inventory Module. The primary drivers of carcinogenic risk (>87% of prioritization score) are Polycyclic Aromatic Hydrocarbons (PAHs) resulting from the rotary pyrolyzer. Similarly, noncancer chronic risk (>80% of prioritization score) is driven by acrolein emissions resulting from pyrolyzer and metal recovery furnaces. Overall, both carcinogenic and non-carcinogenic risk were deemed to be low priority (prioritization score less than 1) based on prioritization score. Therefore, commodity resource and environmental was classified as an “low level facility” and exempt from the program until facility or regulation changes trigger reinstatement.

Industry-Wide Sources

There are three industry-wide source categories determined by CARB: auto body shops, gasoline dispensing facilities (GDF), and dry cleaning facilities. CARB has developed individual industry-wide risk assessment procedures for those three facilities.

Auto body Shops: No new auto body shops were permitted in 2025, and there were no modifications to existing auto body shops. Based on 1996 “Auto Body Shop Industry-Wide Risk Assessment Guidelines”, all auto body facilities located in the District have been found to be “low priority” for health risk. CAPCOA and CARB are currently working on developing new industrywide guidelines for autobody shops. The District is expected to re-prioritize autobody shops after new guidelines are published.

GDF: In 2025, the District processed five applications for new storage tanks at new facilities and 3 applications to modify existing GDFs during 2025. Based on the maximum allowable throughputs and receptor proximity for each GDF, one modified facility in Wofford Heights received an acute hazard index score of 1.42 and was labeled as high risk for acute non-cancer health risk. Three separate facilities in Mojave and Ridgecrest (Jaco Oil) received an acute hazard index of 0.16, 0.24, and 0.33 respectively. Both of these facilities were labeled as intermediate health risk. All the facilities described above will be reprioritized in 2027 based on actual emission data.

Dry cleaning facilities: A phase out of perchloroethylene (Perc) dry cleaning machines by District permitted facilities was recently completed. All four dry cleaning facilities located in the District now use hydrocarbon cleaning fluid only. Hydrocarbon based cleaning fluid has little or no toxicity associated with its use. Therefore, cleaning facilities in the District no longer present a significant health risk to the surrounding community at large.

Reminder of this page intentionally left blank.

RISK REDUCTION REQUIREMENTS

Senate Bill 1731, health risk reduction requirements, was signed into law in 1992 as an adjunct to the Air Toxics "Hot Spots" inventory and assessment requirements. This law requires facilities that pose a significant risk to prepare Risk Reduction and Audit Plans. Risk Reduction and Audit Plans are usually prepared on a facility-by-facility basis; however, CARB has developed ATCM for certain industry types. State law provides these ATCM to be enforced by each local district. Categories identified for ATCM include, for example, diesel piston engines, dry cleaners using perchloroethylene, medical waste incinerators, nonferrous metal melting, cooling towers using hexavalent chromium, and ethylene oxide sterilizers. Affected sources within the District are now complying with these ATCM. Internet links to CARB's ATCM regulations can be found at <http://www.arb.ca.gov/toxics/atcm/atcm.htm>.

To date, no sources in the District have been required to prepare Risk Reduction and Audit Plans as no facility to date has exceeded Board-adopted significance levels requiring public notification and preparation of Risk Reduction and Audit Plans. (See Pages 3-4 for discussion of risk notification guidelines.)

Exposure to diesel exhaust emissions continue to be a primary public health concern in California. District requirements to utilize tiered engines, CARB approved diesel fuel, and assisting businesses to replace older diesel engines with newer, less polluting engines through the Carl Moyer Grant Program will reduce the exposure of eastern Kern County residents to diesel exhaust.

MINIMIZING AIR TOXIC EMISSIONS FROM NEW AND MODIFIED FACILITIES

In 1974, the District's Board of Supervisors adopted Rule 210.1 (New and Modified New Source Review), last revised in May of 2000. Implementation of this rule has been instrumental in minimizing toxic emissions from new and modified facilities, because Rule 210.1 requires all new and modified facilities to utilize Best Available Control Technology (BACT). BACT is applied to criteria pollutant emissions, including oxides of nitrogen (NOx), volatile organic compounds (VOC) and PM. By early 1982, six years before passage of AB2588, the District was actively involved in assessing expected health risk associated with new and modified facilities pursuant to Rule 419 and Section 41700 of the California Health & Safety Code. Since June of 1993, the District has utilized Cal EPA "Guidelines for New and Modified Sources of Toxic Pollutants" to determine if a project is approvable in terms of health risk. This analysis meets criteria specified in the 1997 revision to Cal EPA's "Emission Inventory Criteria and Guidelines for the Air Toxics Hot Spots Program" which allow a district to conduct an alternate evaluation for new and modified sources subject to District permits (i.e., a non-AB2588 process evaluation). Where applicable, the District gives applicants of new projects the choice of complying with the Air Toxics Program either through the permitting process or through submission of an inventory plan and report.

FUTURE OF THE AIR TOXICS PROGRAM

Minimizing TAC emissions continue to be an important part of the District's mission. In August 2016, the Toxics and Risk Managers Committee (TARMAC) of CAPCOA revised Air Toxic "Hot Spots" Program Facility Prioritization Guidelines. These guidelines were revised in

response to revisions to the State's underlying health risk assessment procedure guidelines. The Committee consulted with CARB and OEHHA staff to update these guidelines.

The revised guidelines are intended to provide air pollution control and air quality management districts with suggested procedures in prioritizing facilities into high, intermediate, and low priority categories as required by the Air Toxics "Hot Spots" Information and Assessment Act of 1987 (Air Toxics "Hot Spots" Act) in accordance with Health and Safety Code §44344.4(c). This law established a statewide program for inventory of air toxics emissions from individual facilities as well as requirements for risk assessment and public notification.

According to CAPCOA progress reports, TAC emissions have decreased by 80% over the past 30 years. The District plans to continue to assist in this effort by implementing applicable guidelines and regulations set by state and federal agencies.

SUMMARY

The District's goal and the purpose of air toxics control measures is to reduce health risks to levels deemed acceptable when weighed against the benefit to the public of the activity producing the risk. When weighing risk versus benefit, overall health risk posed by a facility must be considered rather than the fact an individual process may use or emit a substance that has very high unit risk value such as dioxins or hexavalent chromium. In other words, even though a facility may emit a highly toxic substance, if the emission rate is low and dispersion is good, the public health risk can be considered low (i.e. acceptable).

Dispersion is a function of air flow (wind patterns) and distance to a receptor (person). Any facility with potential to emit toxic substances in significant quantities is required to provide highly effective methods of controlling these emissions as well as provide a method of continuously monitoring and ensuring compliance with required air pollution control measures. A facility with potential to emit toxic substances in very small quantities presents no greater health risk (and often much less) to nearby residents than what residents expose themselves to by engaging in day-to-day activities. For example, the health risk presented from living adjacent to a freeway, walking across the street, riding in a car, flying in an airplane, practicing poor eating and/or drinking habits, or by smoking exceed health risk posed by Eastern Kern industrial facilities.

No facility in Eastern Kern County currently poses an increase in cancer risk of more than 10 in 1 million, based on an assessment of 30 years of exposure to carcinogenic emissions. This value can be put into perspective by considering risk posed by some other active and passive events in our lives. Using information from the CDC's National Center for Health Statistics, it was determined: the risk of death from motor vehicle accidents is 121 per 1 million, the risk of death by firearms discharge is 131 per 1 million and the risk of death from opioids is 159 per 1 million.

Generally, development of the unit risk value for a toxic pollutant consists of identifying carcinogenic, chronic, or acute effects on the most sensitive animal species tested and then using this as the expected impact on humans. Consequently, unit risk values are very health-conservative, and, as a result, health risk assessment procedures required to be followed for the District's Air Toxics Program result in a health conservative assessment of risk.

Reminder of this page intentionally left blank.